

A close-up, slightly angled photograph of a white watercolor palette with a black frame, resting on a light-colored wooden surface. The palette contains several circular wells of paint in various colors including blue, green, yellow, orange, red, and brown. The text is overlaid on the center of the image.

NEW & Improved GRANT ELEMENTARY SCHOOL

1. What is a School Improvement Plan?
2. Parent Teacher Organization
3. How can I be more involved in my child's school?
4. How does Grant communicate?
5. Construction!!!!
6. Anything else YOU want to discuss?

What is a School Improvement Plan?

- ★ Improvement goals for teaching & learning
- ★ SIP “1-pager”
- ★ Grade level team goals
- ★ Social Emotional Learning focus



Parent Teacher Organization

- ★ Purpose: student incentives, family involvement, staff support, field trips, assemblies, etc.
- ★ Focus this year: to reintroduce fun activities to our scholars and rebuild family involvement
- ★ Focus next year: bring our community together on 3 different campuses & maintain family involvement
- ★ PTO officers need to be elected in May
- ★ Monthly meetings starting up in April



How can I be more involved in my child's school?



- ★ Volunteering is back in-person! (complete packet)
- ★ Field trips
- ★ Fundraising
- ★ Ask your child's teacher how you can help
- ★ Family Nights/Events (3.14.22 is Family Pi Night)

Communication

- ★ 2021-2022
 - School Messenger
 - Skyward
 - Website
 - “Weekly” grade level folders
 - Newsletters (school & grade level)



- ★ 2022-2023
 - Remind (replaces School Messenger)

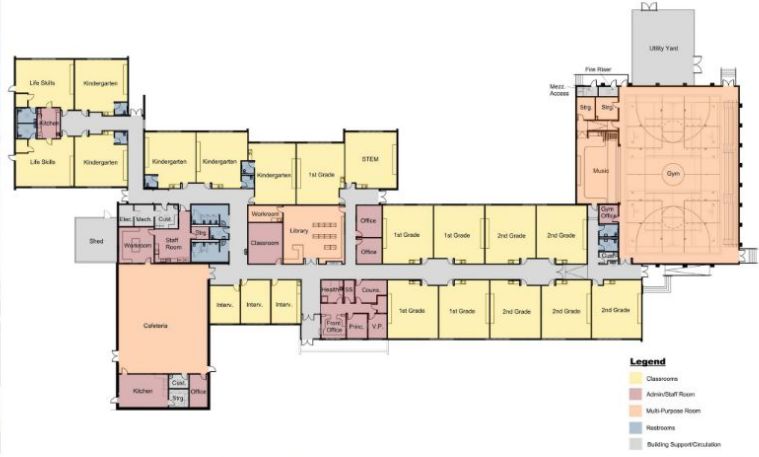
Construction

- ★ July 2022 out to bid
- ★ August 2022 move into 3 campuses
- ★ August 2022 begin construction
- ★ August/September 2023 grand opening





GRANT ELEMENTARY SCHOOL MODERNIZATION AND ADDITION



GRANT ELEMENTARY SCHOOL
MODERNIZATION AND ADDITION



FRONT ENTRY

 **DESIGN WEST**
ARCHITECTS



SCHOOL



GYM ADDITION



3 Campuses 2022-2023



- ★ Campus 1:
 - 10 portables @ district office for Kindergarten & 1st grades
- ★ Campus 2:
 - 8 “classrooms” @ Beezley gym for Life Skills & 2nd grade
- ★ Campus 3:
 - 10 portables (current ones) @ Grant School for 3rd & 4th grades

Construction Questions

- Would students be able to be bused from one campus to the next to help w/ families who have multiple students on more than one campus?
 - *Mrs. Dahl will see if it's possible*
- How can the school communicate the changes & updates with families?
 - *Mrs. Dahl will include updates in the newsletter*
 - *Newsletter coming out next month*
 - *Family Collaboration Team meetings will be separate from PTO*
 - *Next collaboration meeting is April 26th from 6:00-7:00pm*

Miscellaneous Questions

- What can families do to help with Social Emotional Learning at home?
 - *Mrs. Dahl may have a SEL family Night in May*
- When will shorts be allowed again at school for warmer weather?
 - *Mrs. Dahl will include in newsletter*
- Will the district send out communication about masks being optional on monday?
 - *Mrs. Dahl will see if it's possible*